



[www.jeffreygross.co.uk](http://www.jeffreygross.co.uk)

CARDIFF

VALE

CAERPHILLY

BRISTOL

*Beach Road*



*Albany Court is perfectly located for a short walk into the town center with its amazing selection of independent retailers plus cafes and bars plus a walk down Beach Road takes you to the Esplanade and beach with its award winning Pier.*

Comments by Mr Paul Davies

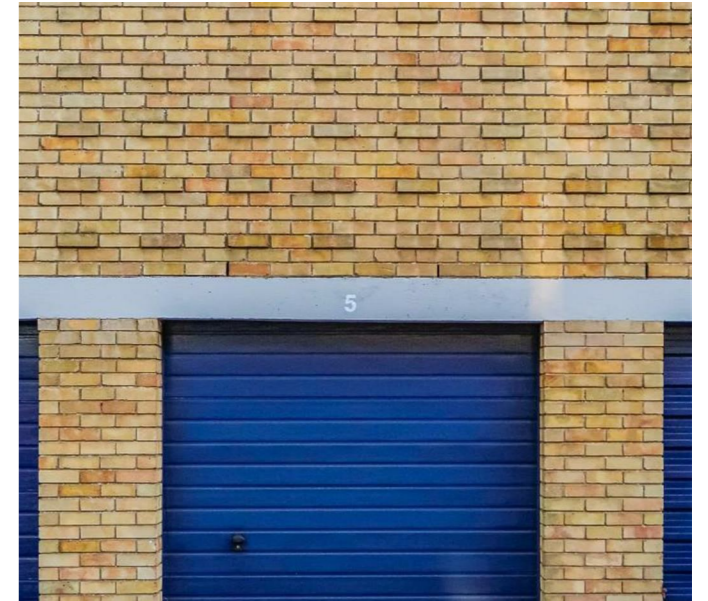


**Property Specialist**

**Mr Paul Davies**

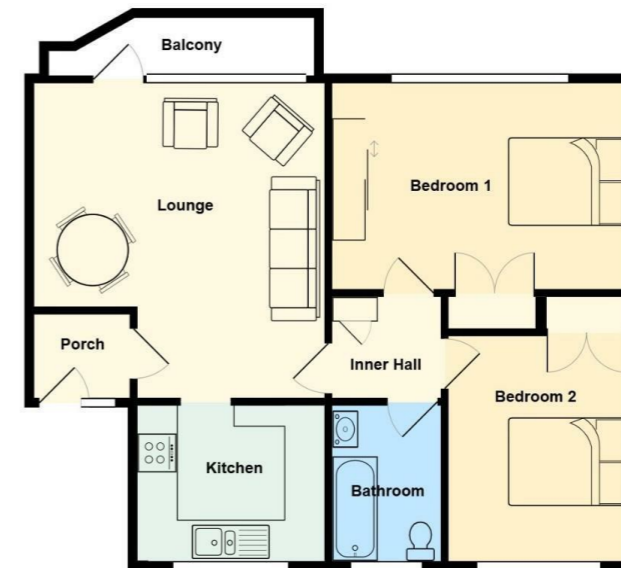
Property Management Co-ordinator

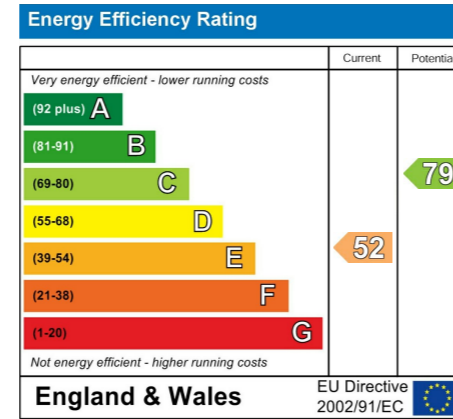
paul.davies@jeffreycross.co.uk



*The family have said their Uncle loved living in the flat as was so easy to stroll into the shops, he also enjoyed the sun streaming onto the balcony from early lunchtime till the sun set in the West. A view overlooking Alexandra Park was a bonus.*

Comments by the Homeowner





# Beach Road

, Penarth, CF64 1JU

£250,000



2 Bedroom(s)



1 Bathroom(s)



710.00 sq ft



Contact our  
**Penarth Branch**

02920415161

## Communal Entrance

Enter via security intercom into the communal entrance, staircase leading to all flats.

## Porch

Enter via door with side glazed panel into porch.

## Lounge 15'9" max x 14'8" max (4.80m max x 4.47m max)

Spacious living room, door with picture window leading onto the balcony - balcony is Westerly facing and affords a view towards Alexandra Park, TV point.

## Kitchen 9'8" x 7'9" (2.95m x 2.36m)

Fitted wall and base units with laminate worktop and inset stainless steel one & half bowl sink & drainer with mixer tap, window to front, concealed combination boiler,

## Inner Hall

Access to both bedrooms & bathroom, built in linen cupboard.

## Bedroom 1 14'10" x 10'4" (4.52m x 3.15m)

Large master double bedroom, window to rear, built in double wardrobes.

## Bedroom 2 11'3" x 9' (3.43m x 2.74m)

Double bedroom, window to front, built in double wardrobes.

## Bathroom

Fitted with a 3 piece suite comprising a panel bath with shower over, pedestal wash hand basin and close coupled wc, window to front.

## Grounds

Albany Court benefits from a well tended and established rear communal lawn with boundary wall, at the front are established shrubs on display.

## Garage 18' x 5" (5.49m x 1.52m)

Single garage within a block, roller door allowing access.

## Information

We believe the property is leasehold with a 999 year lease from 08-09-2006 therefore with 980 years remaining. Council Banding - Band D £2,124.01 (2025-2026)



For sale with no on-going chain and immediate occupation is this purpose built top floor (2nd) spacious flat. Benefitting from a Westerly facing balcony affording views across Alexandra Park and up towards the town center, a single garage plus a 999 year lease from 2006. In need of some internal updating but offers excellent potential. A short walk takes you into the town center plus the other way takes you down to the seafront with its Esplanade, beach and award winning Pier.

Briefly comprising a communal entrance, porch, spacious lounge with access onto the balcony, fitted kitchen, inner hall, 2 double bedrooms - built in wardrobes to the both and a bathroom - shower. Complimented with upvc double glazing and gas central heating - combination boiler.

With an established communal rear lawn plus parking in front of the garage.

Viewing highly recommended.



CARDIFF

VALE

CAERPHILLY

BRISTOL

[www.jeffreygross.co.uk](http://www.jeffreygross.co.uk)